

ADDENDUM NO 1

Project Name: USC Aiken Pool Repairs
Project Number: CP00382816
Project Location: USC Aiken Natatorium
Aiken, SC 29801

April 18, 2014

NOTE: The following amendments, additions, and deletions shall be made to the Construction Documents and Contract Documents. This Addendum shall govern.

Item No 1: Questions/Responses

Below are the responses to the questions received:

Question 1: With the pool facility closed for the repairs, can the contractor use the restroom facilities attached to the pool?

Response to Question 1: Contractor may use pool restroom facilities. Please note that maintenance crews will be performing repairs in the restrooms coincident with the pool repairs. Restroom may be out of service during renovations.

Question 2: Is orange plastic netting on PVC or wood stanchions acceptable as traffic control across the large doors on the ends of the pool?

Response to Question 2: Orange plastic netting with signage indicating that pool area is closed is acceptable.

Question 3: Does the pool contractor need to provide water quality analysis on the fill water already in use for this pool?

Response to Question 3: Contractor will provide water quality sample/analysis and all necessary documentation on the supply water to the pool.

Question 4: Will the pool contractor be able to use the chemicals already on site, owned by USCA, for the chemical balancing of the pool upon refill or will they be required to provide 125% of the quantity needed for the pool?

Response to Question 4: Contractor shall provide chemicals needed to refill and balance pool upon refilling.

Question 5: Are 6" racing lanes (replacing the 1' lanes currently in place) an acceptable alternate?

Response to Question 5: Contractor shall use 12" wide racing lane as specified in project specifications. Note: 6" racing lanes is NOT an acceptable alternate.

Question 6: Are code approved plastic "stick-on" waterline depth indicators acceptable? (See Recreonics Item 12-624)

Response to Question 6: Contractor shall provide painted waterline/depth markers as specified in project specifications. (Note: Plastic "stick-on" waterline depth indicators is NOT an acceptable alternate.)

Question 7: "Aggregate" plaster can mean any of the following: Quartz or Pebble - Exposed or Unexposed. An "unexposed" finish will show the aggregate material, but will feel smooth to the touch. An "exposed" finish has a second step in the application process where the plaster is power rinsed, removing a small amount of the marcite, exposing more of the aggregate. This will produce a slightly rougher finish. As an add / alternate, the cost (low to high) would go quartz unexposed (smooth), quartz exposed (slightly rough), pebble unexposed (slightly rough), pebble exposed (moderately rough). Please define which aggregate finish is requested as the alternate

Response to Question 7: The intent is to achieve a relatively smooth finish. An unexposed or exposed finish with a light wash would be the best and recommended approach. The intent is a product like Diamond Brite that would

provide a more durable finish. The plaster color will need to meet a minimum 55% reflectance value in color for SCDHEC approval.

ITEM No 2: As-Built Drawings

Attached are the as-built drawings for the site location.

ITEM NO 3: Sign-In Sheet

Attached is the prebid sign-in sheet.

END OF ADDENDUM

PERIMETER OVERFLOW AND RECIRCULATION SYSTEM

NO.	QTY.	CAT. NO.	DESCRIPTION
1	240'	9820	FRS-ASR III RECIRCULATING SYSTEM (LOW CARBON TYPE 304 S/S)
2	4	9813	AUTOMATIC INTEGRAL FLOW SURGE WEIR
3	5	9818	SET FLOW GUTTER WASH FITTING
4	2	8818-F	18" X 18" FIBERGLASS MAIN DRAIN BOX W/ PVC GRATE
5	2	8723-S	COMMERCIAL HYDROSTATIC RELIEF VALVE

FILTRATION EQUIPMENT

NO.	QTY.	CAT. NO.	DESCRIPTION
24	1	9792-1535	35 SQ. FT. VACUUM SAND FILTER WITH WATER VALVE CONTROL
25	1	9792-1535	PAFO FLOODED-SUCTION PUMP & MOTOR MODEL #4095-5, 15 H.P., RATED FOR 311 GPM @ 30" TDH, 1750 RPM
26	1	3070-7	PAFO FLOODED-SUCTION AUXILIARY PUMP & MOTOR, MODEL 3070-7, 3 H.P., RATED FOR 256 GPM @ 30" TDH, 1750 RPM

CHLORINATION EQUIPMENT

NO.	QTY.	CAT. NO.	DESCRIPTION
8	1	2519	LIQUID HYPOCHLORINATOR 94 GPD MODEL VP-05
9	1	2516	ACID FEEDER 24 GPD MAX. MODEL VFB4
10	1	3158A	165 GAL. SOLUTION TANK W/ 8" MANWAY & 1/2" BULK FIT.
11	1	210	CHEMICAL FEEDER WITH CHLORINE TYPE
12	1	2038A	55 GALLON SOLUTION TANK W/ 8" MANWAY & 1/2" BULK FIT.

MAINTENANCE EQUIPMENT

NO.	QTY.	CAT. NO.	DESCRIPTION
13	1	3183	VACUUM CLEANER SET
14	1	3180-E	PORTABLE PUMP & MOTOR FOR VACUUM CLEANER
15	1	3330	WALL BRUSH & HOLDER
16	1	3348	SHOWER HEAD
17	1	3387	TELESCOPIC HANDLE

DECK EQUIPMENT

NO.	QTY.	CAT. NO.	DESCRIPTION
18	1	496C-SS	1 METER STAINLESS STEEL CANTILEVER DIVING STAND (BASE BID ONLY)
19	1	4916-D	18"-0" DURAFLEX DIVING BOARD (BASE BID ONLY)
20	2	4540-1	3-TREAD STAINLESS STEEL LADDER W/ CROSS BRACE
21	2	4541-1	4-TREAD STAINLESS STEEL LADDER W/ CROSS BRACE
22	8	4837	ST. ESCUTCHEONS
23	8	4801	1-1/2" BRONZE WEDGE DECK ANCHORS

SAFETY EQUIPMENT

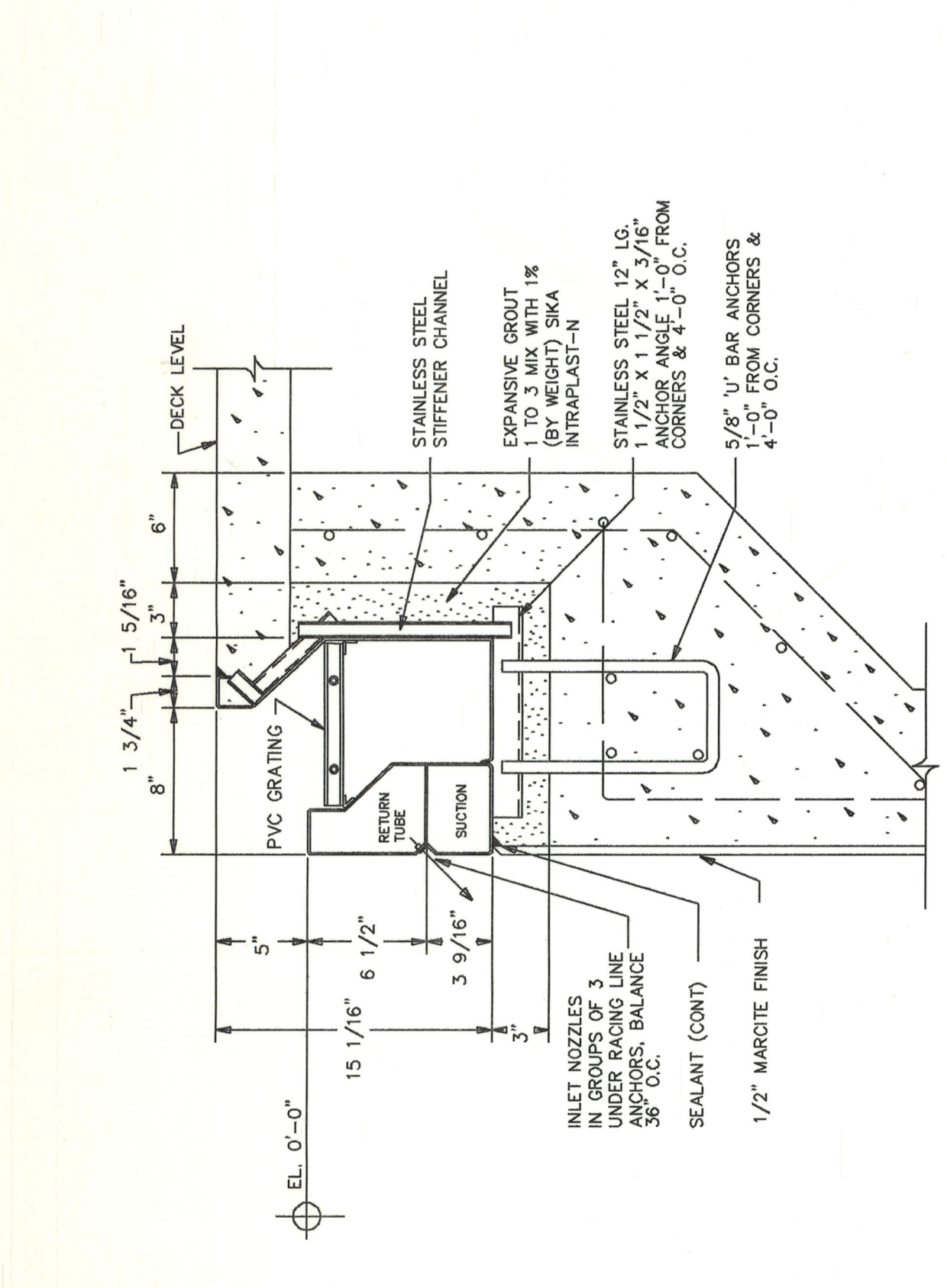
NO.	QTY.	CAT. NO.	DESCRIPTION
24	2	4797-6	MOVABLE 6 FT. STAINLESS STEEL LIFE GUARD CHAIR
25	2	4773	4" FIBERGLASS FIBER REINFORCED BUCK W/ CANVAS COVER
26	47	4774	3/4" POLYETHYLENE ROPE
27	2	4774	3/4" ROPE HOOK TERMINAL
28	2	9026	STAINLESS STEEL BECESSED ANCHOR FOR LIFELINE
29	2	4778	5" X 9" LIFELINE FLOATS

RACING EQUIPMENT

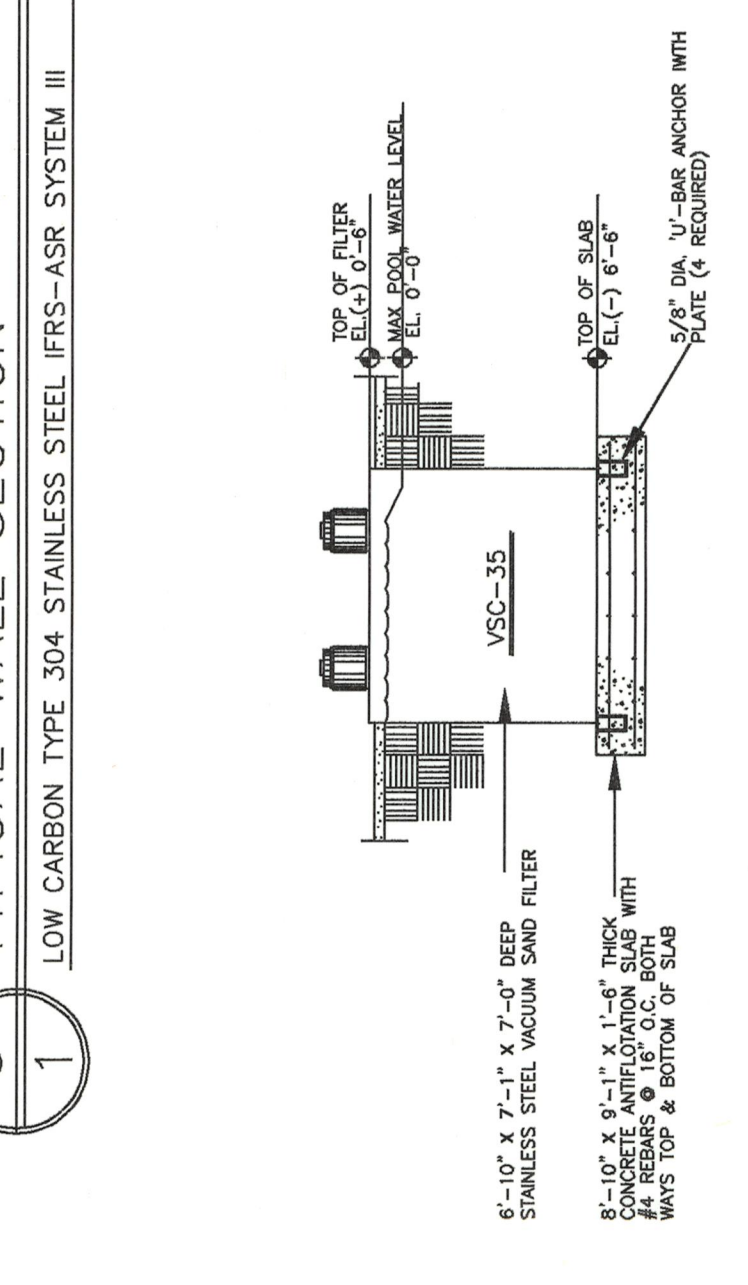
NO.	QTY.	CAT. NO.	DESCRIPTION
30	6	4909	E-Z SET TWO STARTING PLATFORM W/ ANCHOR
31	14	4921	WAVE COILING RACING LINES FOR 25 YARD COURSE
32	14	4922	WAVE COILING RACING LINES FOR 50 YARD COURSE
33	4	4905	STAINLESS STEEL BACKSTROKE MARKER POST W/ ANCHOR
34	2	4906	BACKSTROKE FLAGS & ROPE, 100 FT.
35	2	4905-R	STAINLESS STEEL RECALL POST W/ ANCHOR

MISCELLANEOUS EQUIPMENT

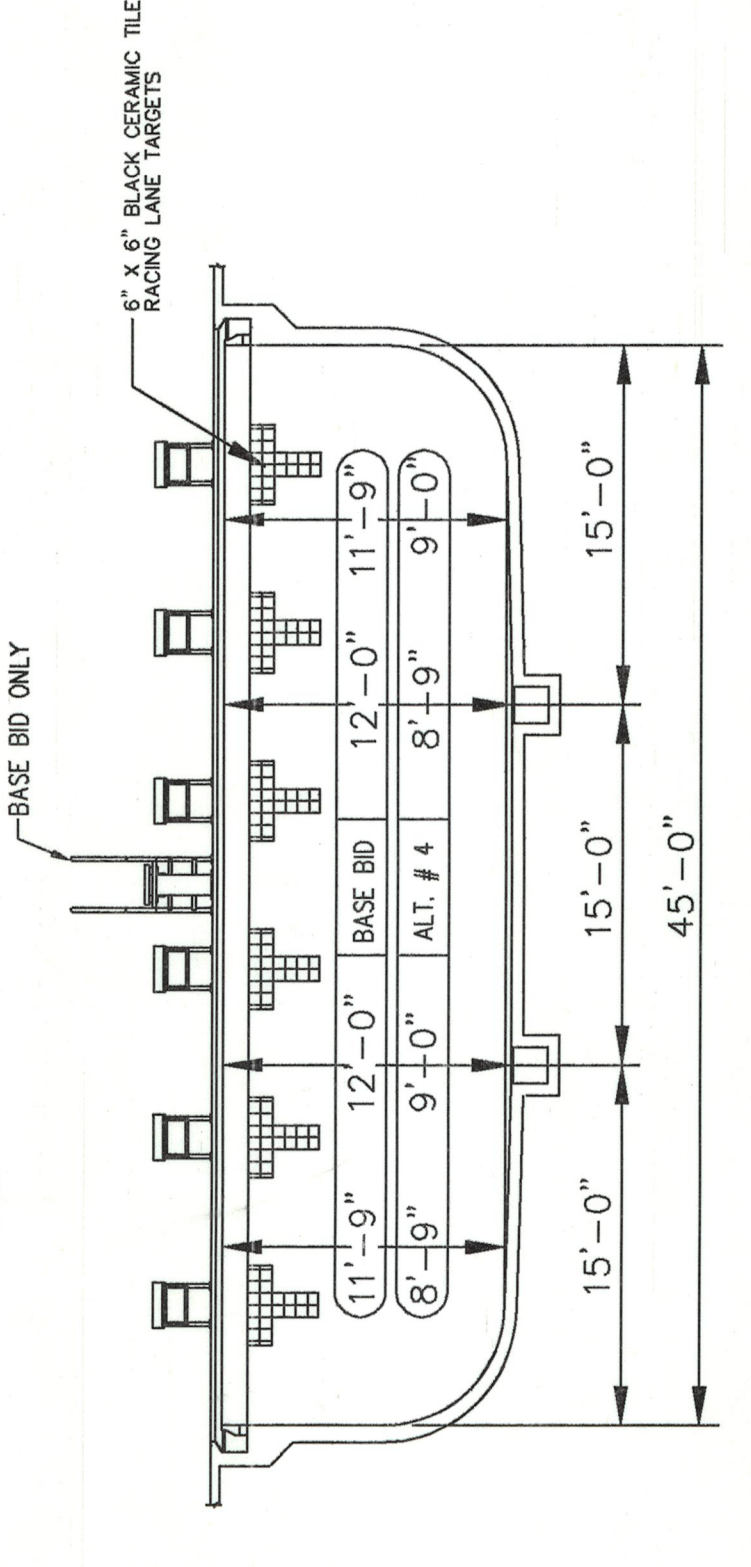
NO.	QTY.	CAT. NO.	DESCRIPTION
36	1	6610-ASR	AUTOMATIC WATER LEVEL & ASR CONTROLLER
37	1	P-624	RAYPAK 827,000 BTU/HR INPUT GAS-FIRED HEATER, 80% MIN. EFF.
38	1	-	HANDICAP POOL LIFT
39	1	-	MANUAL ON/OFF BOILER SWITCH IN POOL EQUIP. ROOM
40	1	-	TIME SWITCH (TIME CLOCK) PUMP & HEATER CONTROL



5 TYPICAL WALL SECTION
1 LOW CARBON TYPE 304 STAINLESS STEEL FRS-ASR SYSTEM III



4 FILTER ANCHOR DETAIL
N.T.S.



3 TRANSVERSE POOL SECTION
1 PNEUMATICALLY APPLIED CONCRETE CONSTRUCTION*

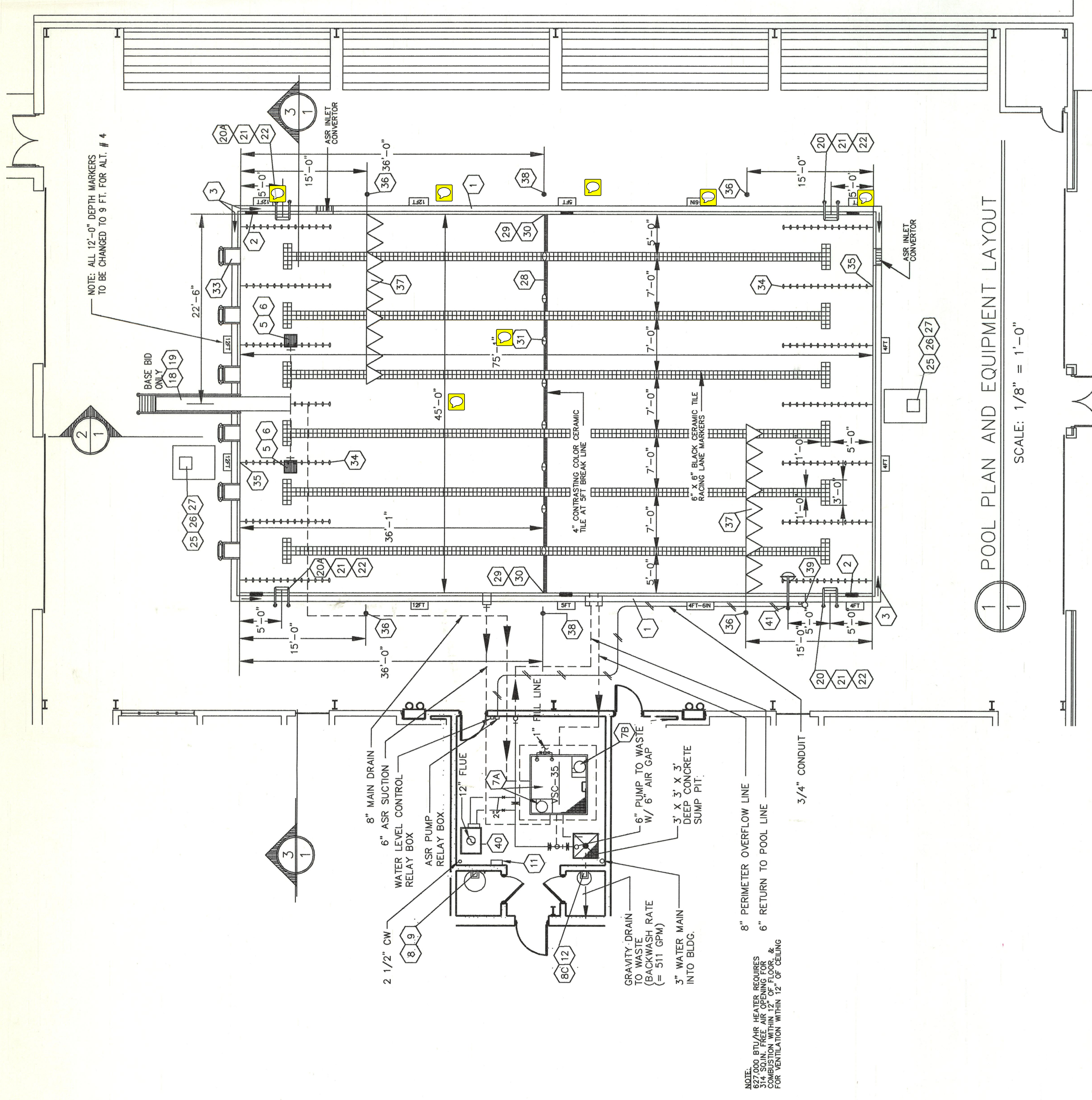
SCALE: 1/8" = 1'-0"

POOL NOTES: (BASE BID DEPTH OF 12'-0")

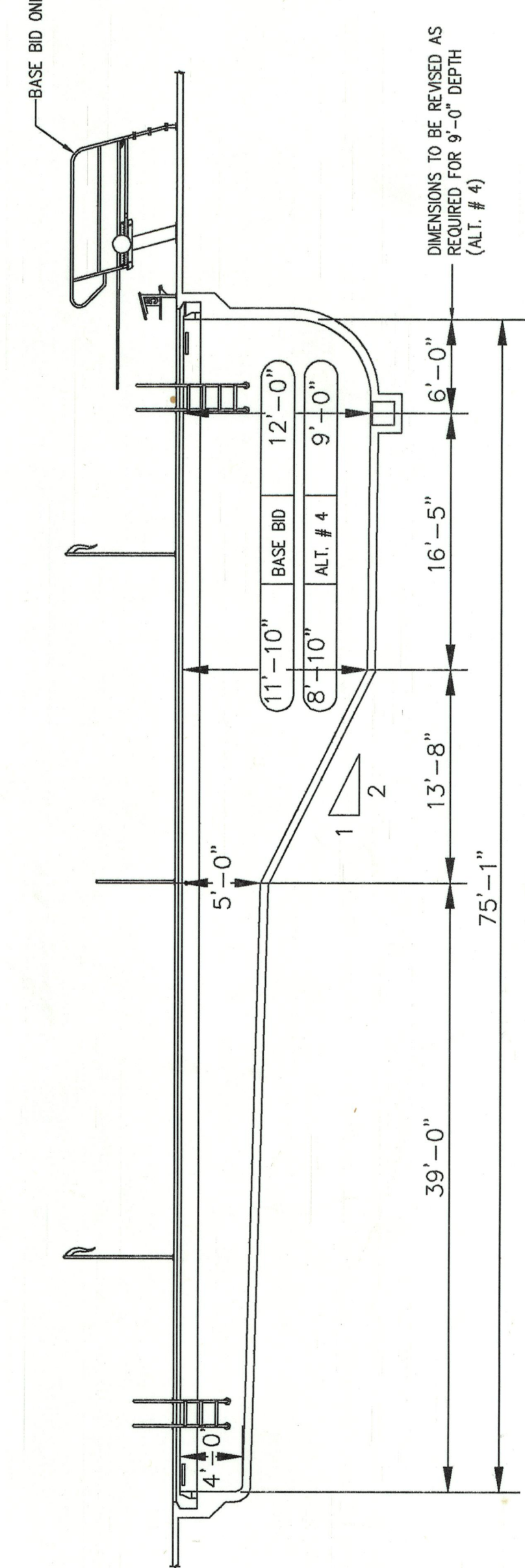
1	POOL PERIMETER = 240'-2"
2	POOL AREA = 3,379 SQ. FT.
3	POOL CAPACITY = 184,000 GALS.
4	POOL FLOODED-SUCTION PUMP & MOTOR = 511 GPM
5	TOTAL RECIRCULATION = 511 GPM
6	FILTER AREA = 35 SQ. FT.
7	FILTER RATE PER SQ. FT. OF FILTER AREA = 14.6 GPM

NOTE:
VALUES IN ABOVE TABLE TO BE REVISED FOR 9'-0" DEPTH (ALT. # 4)

- GENERAL NOTES:
1. O DENOTES EQUIPMENT LIST NUMBER.
 2. 40 PIPING WITH SOLVENT WELD SOCKET FITTINGS.
 3. DIVING AREA DEPTHS AND DIMENSIONS MEET MINIMUM 1995 NCAA REGULATIONS FOR 3-METER DIVING.
 4. COORDINATE FINAL PLUMBING AND ELECTRICAL CONNECTIONS WITH ALL CONTRACTORS, STOP DOWN TRANSFORMERS AND OTHER EQUIPMENT NECESSARY FOR A COMPLETE POOL PACKAGE SHALL BE SUPPLIED WITH THE POOL EQUIPMENT PACKAGE BY THE SUPPLIER.
 5. ALL ELECTRICAL, PUMP, PIPING AND HEATER PUMPS, ALL SHALL BE SUPPLIED AND INSTALLED BY THE POOL EQUIPMENT CONTRACTOR. POOL WORK FROM THE FOUNDATION OUT SHALL BE BY THE POOL EQUIPMENT CONTRACTOR.



1 POOL PLAN AND EQUIPMENT LAYOUT
SCALE: 1/8" = 1'-0"

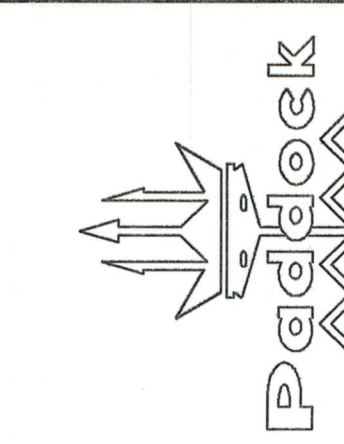


2 LONGITUDINAL POOL SECTION
1 PNEUMATICALLY APPLIED CONCRETE CONSTRUCTION*

SCALE: 1/8" = 1'-0"

DIMENSIONS TO BE REVISED AS REQUIRED FOR 9'-0" DEPTH (ALT. # 4)

NOTE:
872,000 BTU/HR HEATER REQUIRES COMBUSTION WITHIN 10' OF FLOOR & FOR VENTILATION WITHIN 12' OF CEILING

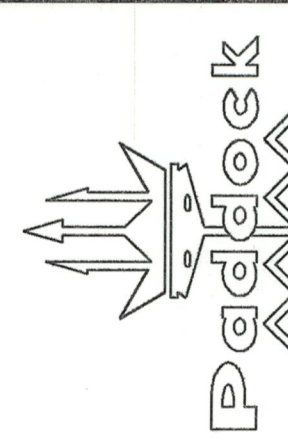


LISTED FILTER
CATALOG NO. 9792-1535-SS

UNIVERSITY OF SOUTH CAROLINA
AT AIKEN

POOL PLAN AND SECTIONS

PAADOCK POOL EQUIPMENT CO. INC.
ROCK HILL, S.C. 29730



DRAWN BY M.J.G.
DATE 7-27-95
DRAWING NO. PL-2594-1

SP1

DATE JAN. 3, 1996
DRAWN BY JSW

POOL PLAN AND SECTIONS

UNIVERSITY OF SOUTH CAROLINA
STATE PROJECT NO. H29-9503-AC
AT AIKEN
171 UNIVERSITY PARKWAY
AIKEN, SC 29801

USCA

SWIMMING POOL A/E
STATE PROJECT NO. H29-9503-AC
UNIVERSITY OF SOUTH CAROLINA
AT AIKEN
171 UNIVERSITY PARKWAY
AIKEN, SC 29801

BNWRIGHT ASSOCIATES

BOX 5287 GREENVILLE, SOUTH CAROLINA 29606 803-232-8140

BNWRIGHT ASSOCIATES

BOX 5287 GREENVILLE, SOUTH CAROLINA 29606 803-232-8140